

4

3

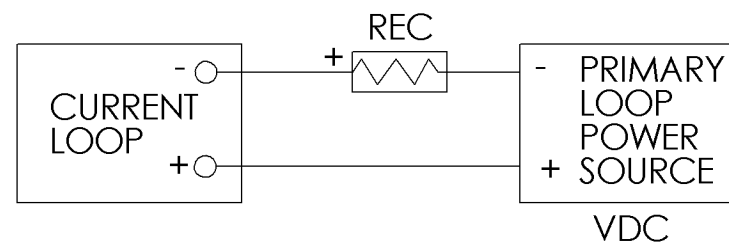
2

1

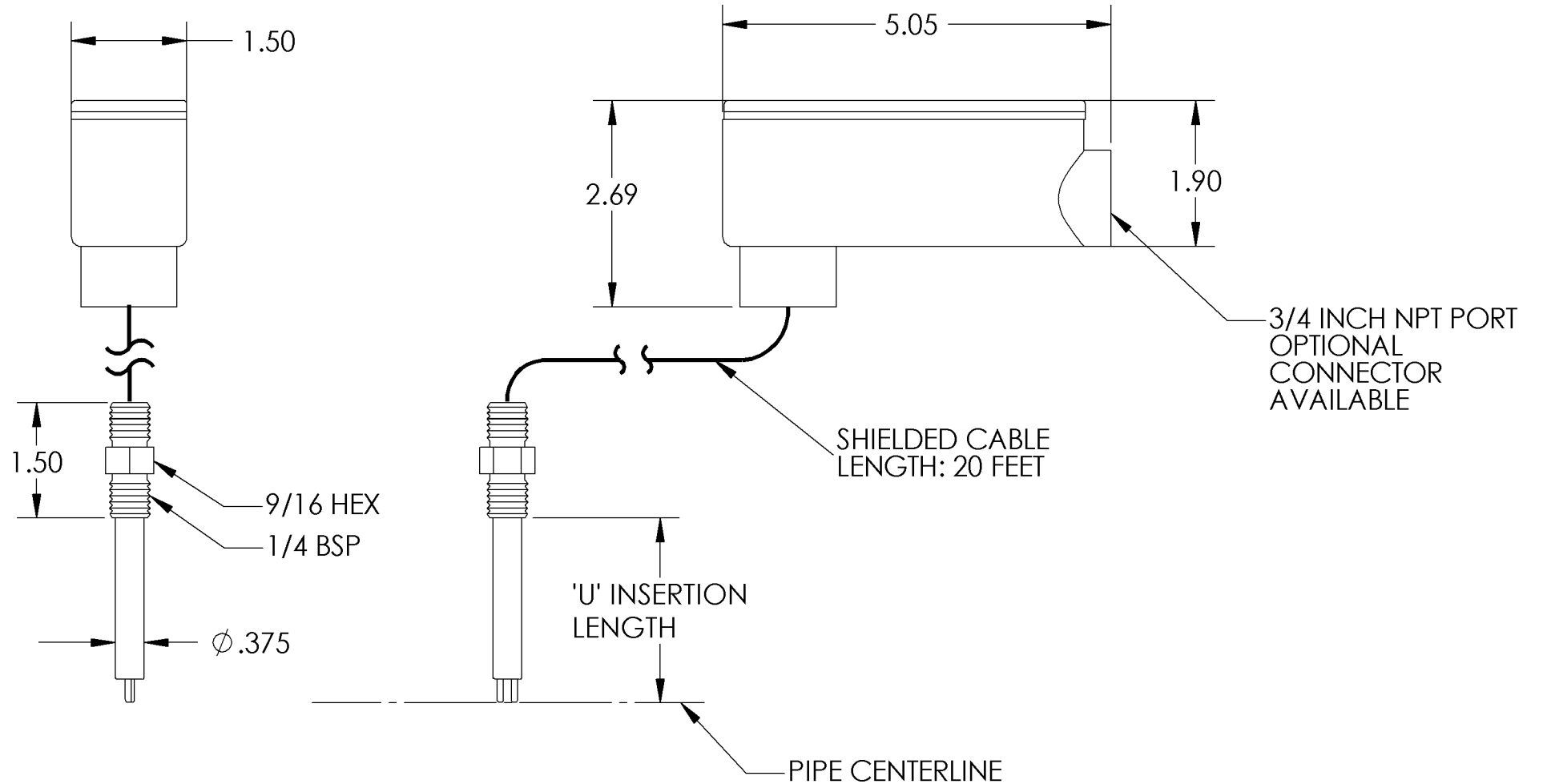
### NOTICE OF PROPRIETARY RIGHTS

This document contains confidential technical data, including trade secrets and proprietary information which are the property of Fluid Components Intl (FCI). Disclosure of this data to you is expressly conditioned upon your assent that its use is limited to use within your company only (and does not include manufacture or processing uses). Any other use is strictly prohibited without the prior written consent of FCI.

| REVISIONS |     |             |      |          |
|-----------|-----|-------------|------|----------|
| ZONE      | REV | DESCRIPTION | DATE | APPROVED |
|           |     |             |      |          |



REC RESISTANCE SHOULD NOT EXCEED 250 OHMS



6. TEMPERATURE RANGE:  
 ELECTRONICS: -40 TO +140 °F (-40 TO 60 °C)  
 PROCESS: -40 TO +250 °F (-40 TO 121 °C)

5. SIGNAL OUTPUT:  
 NORMAL OUTPUT: 14mA  
 ALARM CONDITION: 18 mA

4. ELECTRICAL DATA:  
 2 WIRE LOOP POWERED, 24 VDC

3. PRESSURE, SAFETY PROOF (ELEMENT): 365 PSIG.

2. WEIGHT: 1.5 LBS MAXIMUM.

1. MATERIAL:  
 ELEMENT: 300 SERIES STAINLESS STEEL.  
 HOUSING: ALUMINUM, WEATHER PROOF

**NOTES: UNLESS OTHERWISE SPECIFIED**

| CONFIGURATION BLOCK |                   |                      |
|---------------------|-------------------|----------------------|
| FCI PART NO.        | CUSTOMER PART NO. | INSERTION 'U' LENGTH |
| 017961-01           | TBD               | 3.00                 |

## -01 CONFIG

|   |  |              |  |         |  |   |  |               |  |                 |  |
|---|--|--------------|--|---------|--|---|--|---------------|--|-----------------|--|
| UNLESS OTHERWISE SPECIFIED DIMENSIONS ARE IN INCHES |  | CONTRACT NO. |  |         |  | <b>FCI</b> ® FLUID COMPONENTS INTL<br>a limited liability company<br>SAN MARCOS, CA 92069 |  |               |  |                 |  |
| TOLERANCES  |  | APPROVALS    |  | DATE    |  | APPROVALS   |  | DATE          |  | TITLE           |  |
| DECIMALS    ANGULAR                                 |  | DRAWN        |  | 8/22/01 |  | CHECK   |  |               |  | WET/DRY SWITCH  |  |
| .X    ±.1    ±1/2°                                  |  | SCHARF       |  |         |  |   |  |               |  | SIZE            |  |
| .XX    ±.03   |  | MFG          |  | ENGR    |  |   |  | CAGE CODE     |  | DWG NO.         |  |
| .XXX    ±.010                                       |  | QA           |  |         |  |   |  | 64818         |  | ILLUSTRATION 12 |  |
| MATERIAL  |  |              |  |         |  |   |  | SCALE         |  | SHEET           |  |
| NOTED   |  |              |  |         |  |   |  | 1/1           |  | 1 OF 1          |  |
| MACH SURFACE FINISH: 125 RMS                        |  |              |  |         |  |   |  | RELEASE DATE: |  |                 |  |
| MACH RAD: .030                                      |  |              |  |         |  |   |  |               |  |                 |  |
| DO NOT SCALE DRAWING                                |  |              |  |         |  |   |  |               |  |                 |  |
| PARTS TO BE FREE OF BURRS & SHARP EDGES             |  |              |  |         |  |   |  |               |  |                 |  |

