

SUBJECT	CAGE CODE	DATE	SECTION	PAGE	REVISION
FC88 KIT	64818	7-11-12		i	B

FC88 KIT

APPROVALS:

Jonathan Babineau

ORIGINATOR

Mark Ogilvie

ENGINEERING

Nancy Peters

MANUFACTURING

Burt Tanaka

QUALITY ASSURANCE

NOTICE OF PROPRIETARY RIGHTS

This document contains confidential technical data, including trade secrets and propriety information that is the property of Fluid Components Intl (FCI). Disclosure of this data to you is expressly conditional upon your assent that its use is limited to use within your company only (and does not include manufacture or processing uses). Any other use is strictly prohibited without prior written consent of FCI.

SUBJECT	CAGE CODE	DATE	SECTION	PAGE	REVISION
FC88 KIT	64818	7-11-12		iii	B

Contents

INTRODUCTION.....	1
General.....	1
Ordering of Parts.....	1
Publication Requests.....	1
AF88/AF89 OPERATION.....	1
GF90/GF92 OPERATION.....	3
FLEXMASSTER OPERATION.....	4
ST98 OPERATION.....	5
ST50, ST51, ST75 OPERATION.....	6

SUBJECT**FC88 KIT****CAGE CODE****64818****DATE****7-11-12****SECTION****PAGE****1****REVISION****B**

INTRODUCTION

General

1. This kit contains the parts necessary to connect the FC88 Control Display to the GF90/GF92, AF88/AF89, ST95/ST96, ST98, ST50, ST51 and ST75 instruments.
2. Connection instructions are given that show how to connect the FC88 To FCI's Instruments.

Ordering of Parts

Ordering of parts are to be directed as follows:

Fluid Components International LLC
1755 La Costa Meadows Drive
San Marcos, California 92078
Attention: Customer Sales
Phone: (800) 854-1993 or (760) 744-6950 or FAX: (760) 736-6250
www.fluidcomponents.com

Publication Requests

Requests for copies of publications should be directed to the address shown in the above paragraph.

AF88/AF89 OPERATION

Plug the cord into the FC88 as shown in Figure 1. Plug the other end of the cord into P1 of the main circuit board of the AF88 or AF89 as shown in Figure 1. If the FC88 will not be used in conjunction with the FlexMASter the adapter circuit board may be discarded. The FC88 is ready for use.

Using FC88 With Multiple Instrument Models

If an FC88 Control Display Unit has been used on a FlexMASter instrument and it needs to be used on an AF88 or AF89 instrument the FC88 will need to be reprogrammed. The following instructions reprogram the FC88:

1. With the FC88 cable disconnected from the AF88/89, simultaneously depress the CTRL, SHIFT, and F1 keys.
2. While holding down all three keys depressed in Step 1, plug the FC88 cable into the energized AF88/89.
3. A message should immediately come up on the screen of the FC88 as shown below.

SUBJECT

FC88 KIT

CAGE CODE

64818

DATE

7-11-12

SECTION

PAGE

2

REVISION

B

LOAD DEFAULT DATA!

ARE YOU SURE?

YES

NO

4. Press the "A" (YES) key on the FC88. Wait for the FC88 to beep.
5. Press the following keys in sequence (not simultaneously): SHIFT, CTRL, SPACE.
6. Press the "A" key until "9600 BAUD" appears on the screen. Press the "E" key to save.
7. Press the "A" key until "PARITY=SPACE" appears on the screen. Press the "E" key to save.
8. The screen should now read "32 CHARACTER DISPLAY". Press "E" to save.
9. The set-up is complete. If the FC88 is plugged into a working AF88/89 the FC88 should now be operating in its normal mode with the instrument.

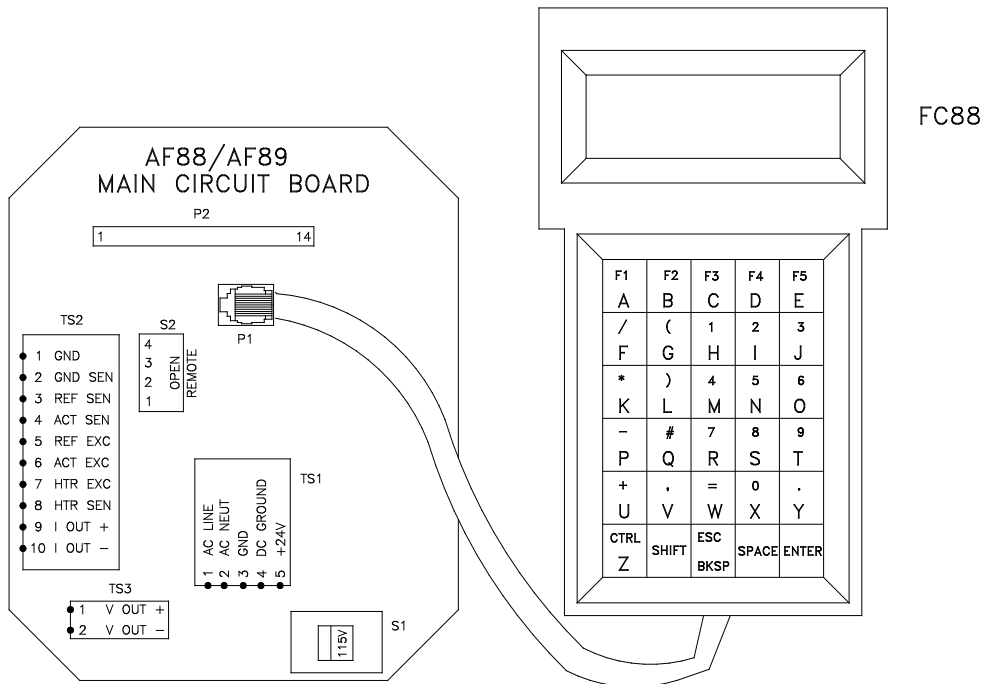


FIGURE 1

C00533-5

SUBJECT

FC88 KIT

CAGE CODE

64818

DATE

7-11-12

SECTION

PAGE

3

REVISION

B

GF90/GF92 OPERATION

Plug the cord into the FC88 as shown in Figure 2. Plug the other end of the cord into JP3 of the top control board of the GF90 or GF92 as shown in Figure 2. If the FC88 will not be used in conjunction with the FlexMASter the adapter circuit board may be discarded. The FC88 is ready for use.

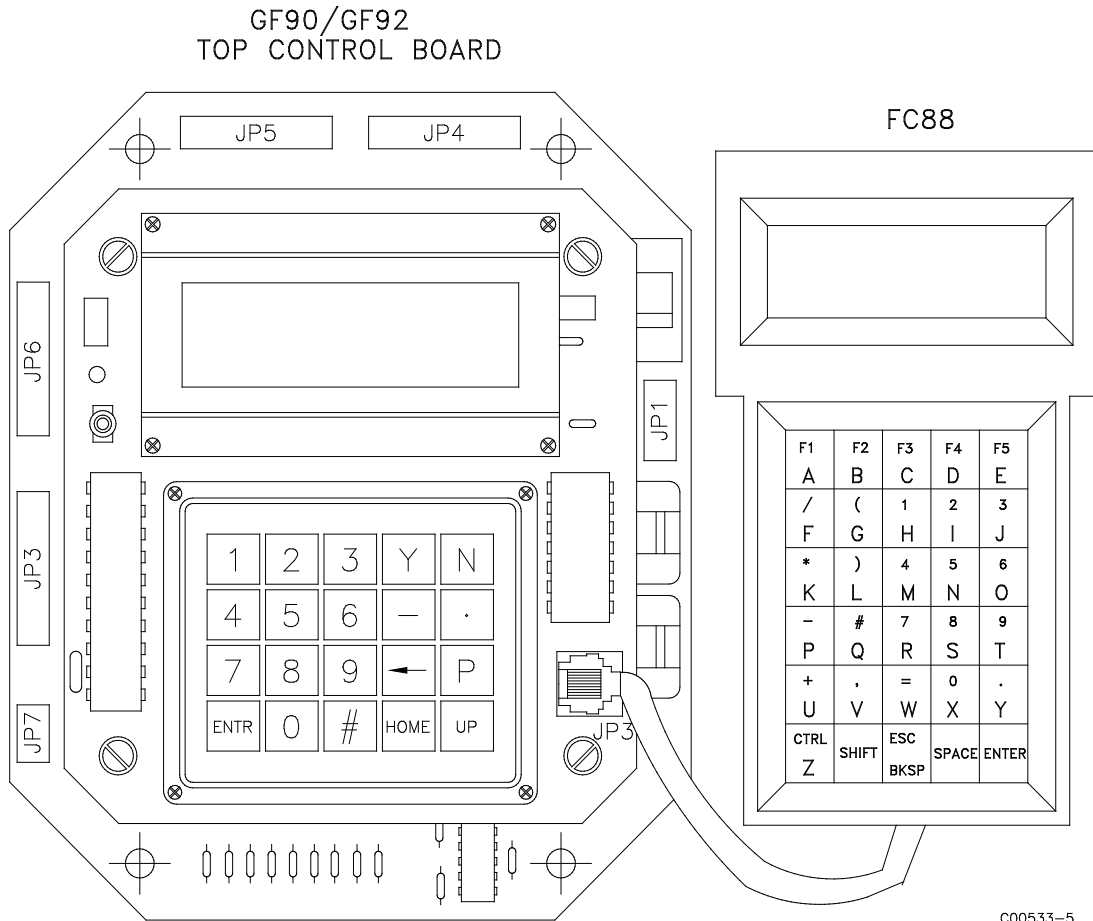


FIGURE 2

SUBJECT

FC88 KIT

CAGE CODE

64818

DATE

7-11-12

SECTION

PAGE

4

REVISION

B

FLEXMASSTER OPERATION

Plug the cord into the FC88 as shown in Figure 3. Plug the other end of the cord into the P1 of the adapter circuit board Part Number 016932. Plug P2 of the adapter circuit board into the serial communication connector of the processor board of the FlexMASter instrument as shown in Figure 3. The FC88 is ready for use.

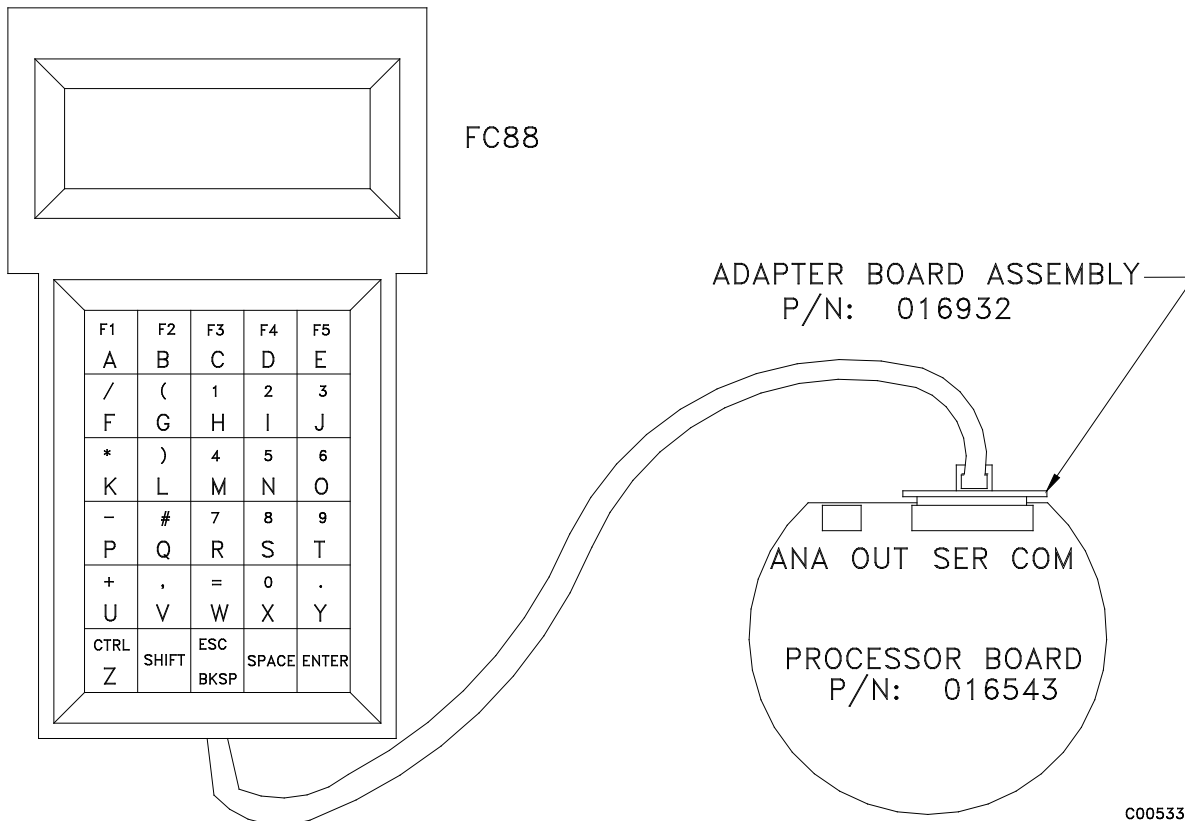


FIGURE 3

SUBJECT

FC88 KIT

CAGE CODE

64818

DATE

7-11-12

SECTION

PAGE

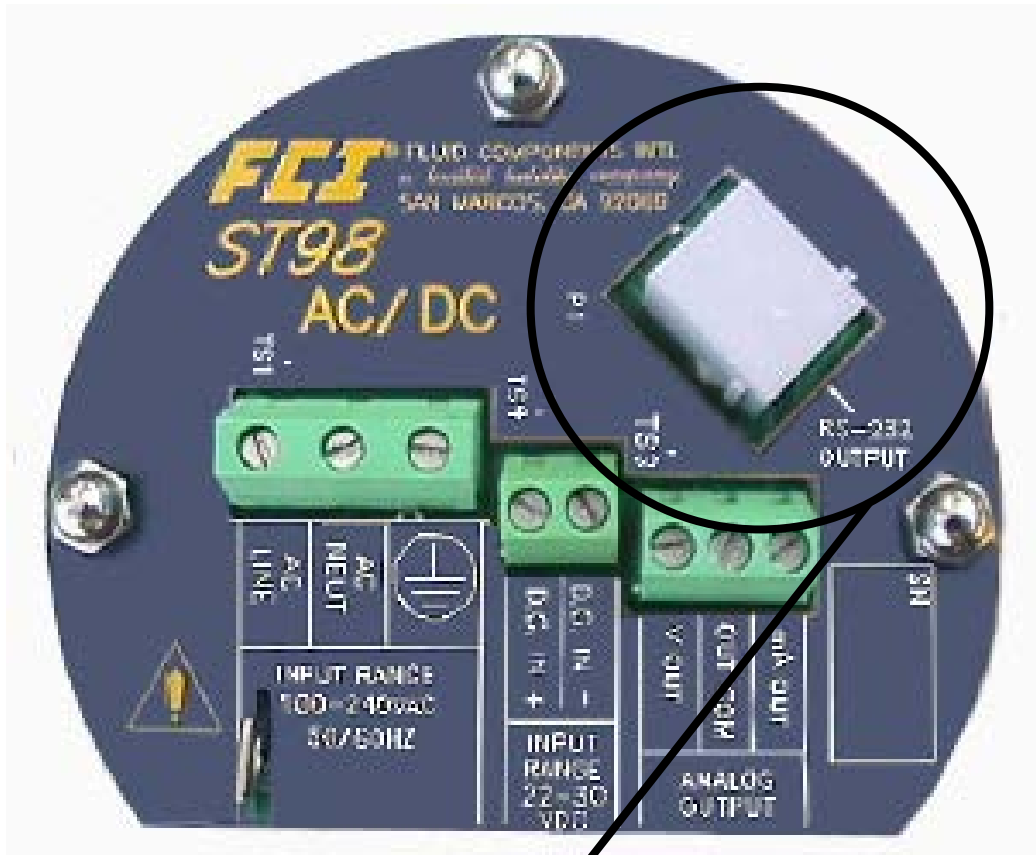
5

REVISION

B

ST98 OPERATION

Plug the cord into the FC88. Plug the other end of the cord into P1 of the Customer Connection Board inside of the ST98 instrument (pictured in Figure 4). The FC88 is ready for use.



P1

FIGURE 4

SUBJECT

FC88 KIT

CAGE CODE

64818

DATE

7-11-12

SECTION

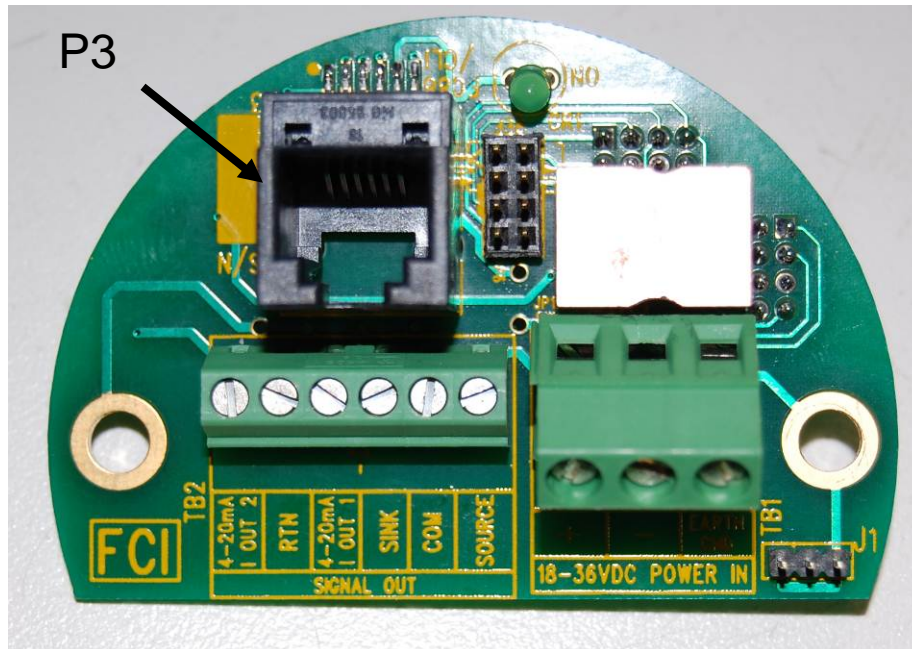
PAGE

6

REVISION

B**ST50, ST51, ST75 OPERATION**

Plug the cord into the FC88. Plug the other end of the cord into P3 of Customer Connection Board inside of the ST50, ST51 or ST75 instrument (pictured in Figure 5). The FC88 is ready for use.

**FIGURE 5**