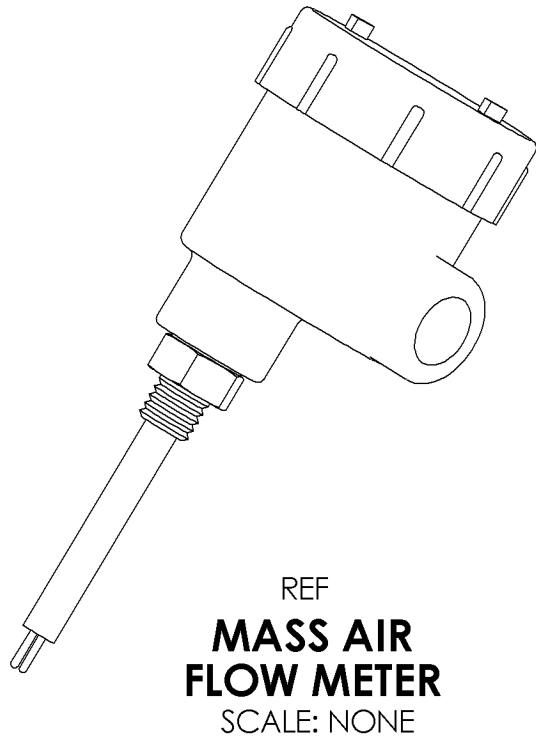


NOTICE OF PROPRIETARY RIGHTS

This document contains confidential technical data, including trade secrets and proprietary information which are the property of Fluid Components Intl (FCI). Disclosure of this data to you is expressly conditioned upon your assent that its use is limited to use within your company only (and does not include manufacture or processing uses). Any other use is strictly prohibited without the prior written consent of FCI.

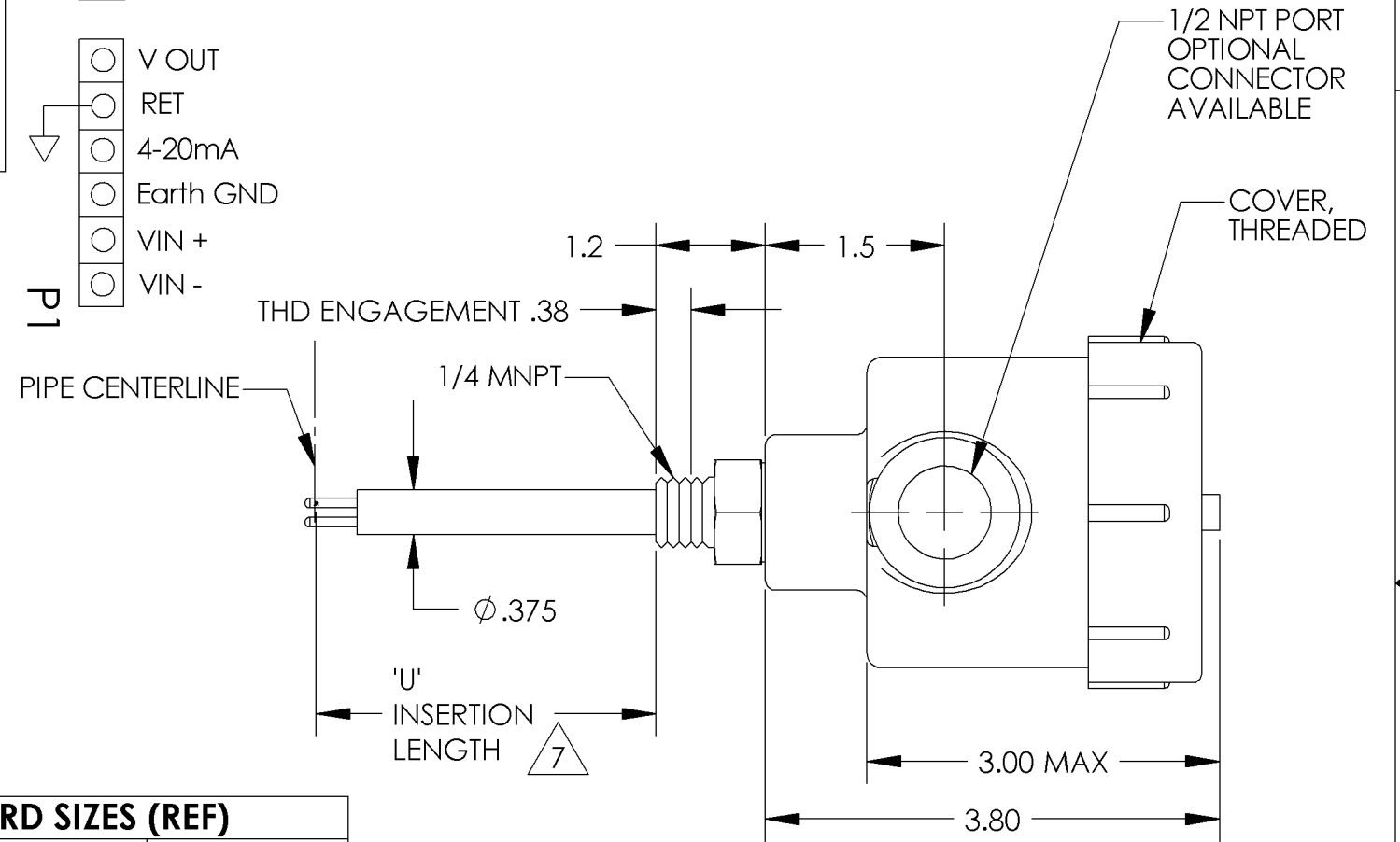
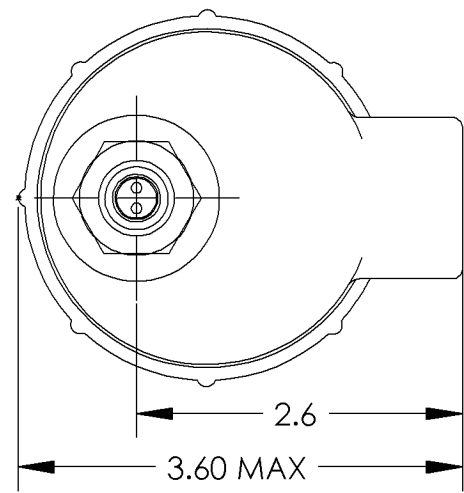
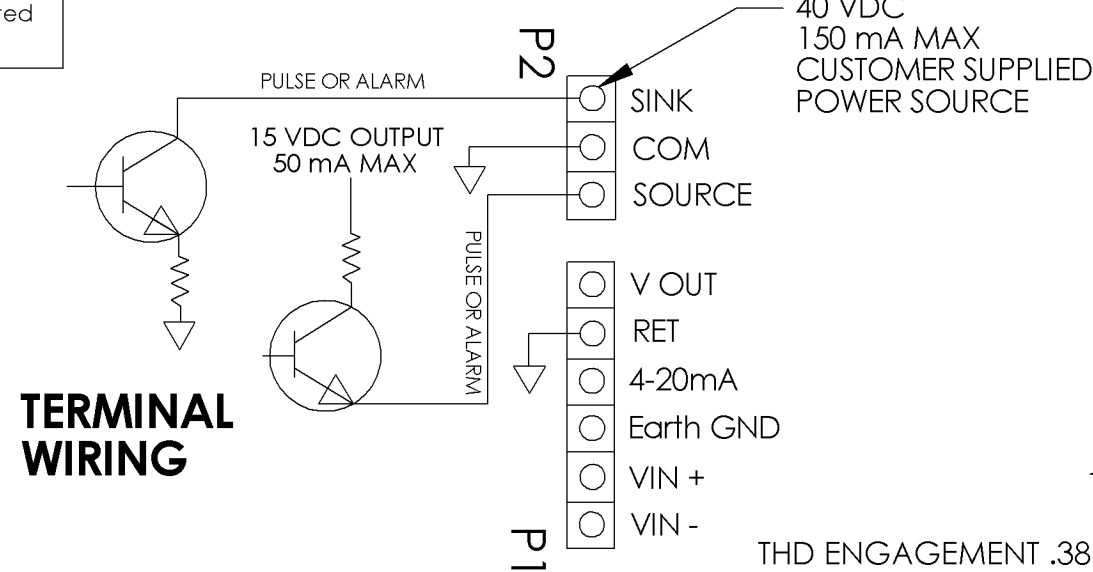
REVISIONS				
ZONE	REV	DESCRIPTION	DATE	APPROVED



7 INSERTION PROBE LENGTHS HAVE BEEN DETERMINED BASED ON MATING WITH 1/4" 3000 LB THREDOLET. (THREDOLET HEIGHT 0.75 INCH)

- TEMPERATURE RANGE:
ELECTRONICS: -40 TO +140 °F (-40 TO 60 °C)
PROCESS: -40 TO +250 °F (-40 TO 121 °C)
- FLOW RATE: 1 TO 800 SFPS RANGE. CUSTOMER SPECIFIED ZERO & SPAN (MINIMUM 10:1, MAXIMUM 100:1 TURNDOWN)
- ELECTRICAL DATA:
POWER REQUIREMENTS: 18 TO 36 VDC
OUTPUT: 4-20 mA (PROPORTIONAL TO MASS FLOW)
- PRESSURE, SAFETY PROOF: 500 PSIG.
- MAKE FROM 018070-01-01-XXXX
- MATERIAL:
ELEMENT: 300 SERIES STAINLESS STEEL.
HOUSING: DIECAST ALUMINUM, COLOR, GRAY.

NOTES: UNLESS OTHERWISE SPECIFIED



STANDARD SIZES (REF)

FCI PART NO.	INSERTION 'U' LENGTH	NOMINAL PIPE DIAM
018094-0098	.98	3/4 INCH
018094-0111	1.11	1 INCH
018094-0167	1.67	2 INCH
018094-0223	2.23	3 INCH
018094-0274	2.74	4 INCH
018094-0380	3.80	6 INCH

ENVELOPE DRAWING

TOP ASSY		OEM		UNLESS OTHERWISE SPECIFIED DIMENSIONS ARE IN INCHES TOLERANCES DECIMALS ANGULAR .X ±.1 ±1/2° .XX ±.03 .XXX ±.010	CONTRACT NO.				FCI [®] FLUID COMPONENTS INTL a limited liability company SAN MARCOS, CA 92069			
NEXT ASSY		USED ON			APPROVALS	DATE	APPROVALS	DATE	TITLE			
APPLICATION				MATERIAL	CONTRACT		DRAWN		MASS GAS FLOW METER			
THIRD ANGLE PROJECTION				NOTED	QUAL		SCHARF					
MACH SURFACE FINISH: 125 RMS		MACH RAD: .030		MFG		ENGR		SIZE	CAGE CODE	DWG NO.	REV	
DO NOT SCALE DRAWING		PARTS TO BE FREE OF BURRS & SHARP EDGES		QA				B	64818	ILLUSTRATION 1	6	
				RELEASE DATE:		SCALE 1/1		SHEET 1 OF 1				