

NOTICE OF PROPRIETARY RIGHTS

This document contains confidential technical data, including trade secrets and proprietary information which are the property of Fluid Components Intl (FCI). Disclosure of this data to you is expressly conditioned upon your assent that its use is limited to use within your company only (and does not include manufacture or processing uses). Any other use is strictly prohibited without the prior written consent of FCI.

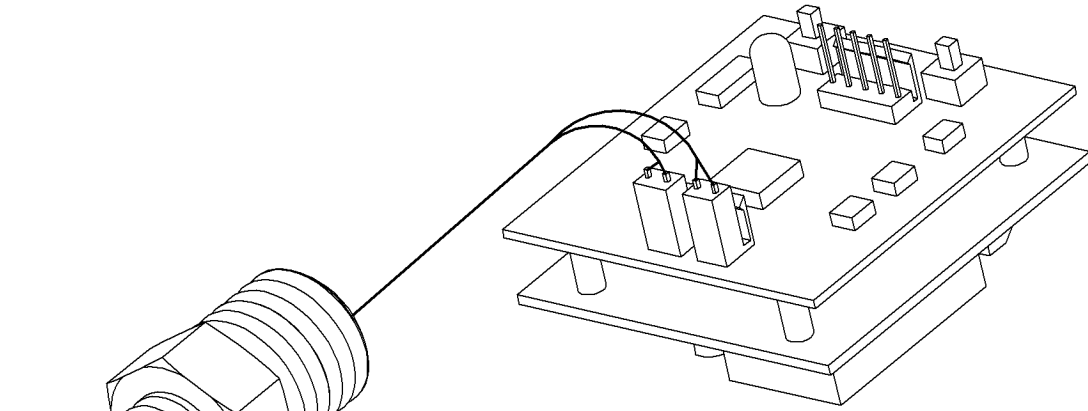
**ELECTRICAL CONNECTOR
(LOCATED ON CIRCUIT BOARD)**

- J1-1 -V in (POWER GROUND)
- J1-2 +V in (4.5 TO 9 VDC, 3 WATTS MAX)
- J1-3 SPARE
- J1-4 4 - 20 mA (750 OHMS MAX LOAD)
- J1-5 RETURN (4-20 Vout RETURN)
- J1-6 VOLTAGE OUTPUT (0-10 VDC)

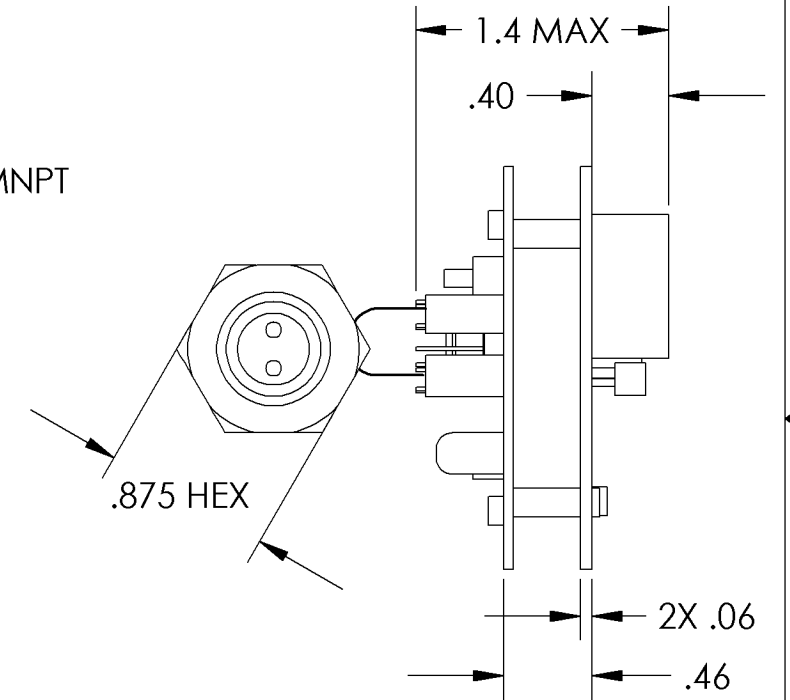
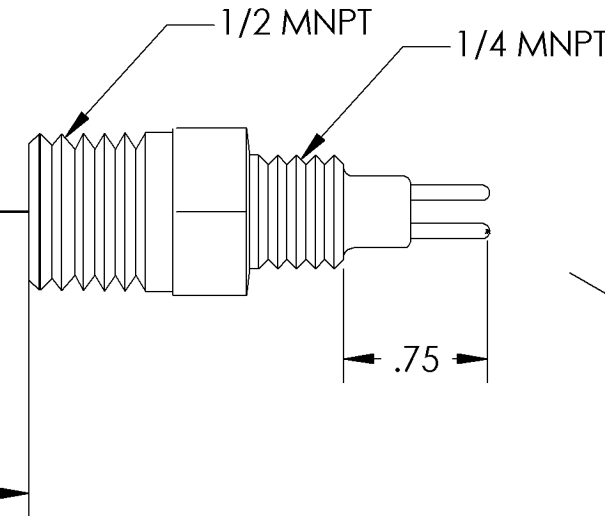
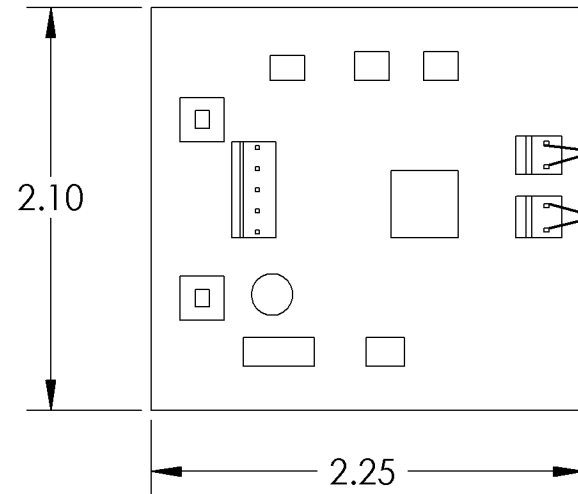
CONNECTOR PIN OUT

REVISIONS

ZONE	REV	DESCRIPTION	DATE	APPROVED



REF
MASS FLOW
METER
SCALE: NONE



- 7. UNIT INCLUDES POWER SAVING SOFTWARE [DEFAULT SETTING, 2 MINUTES, ADJUSTABLE THROUGH RS232 INTERFACE]. TOGGLING THE POWER OFF/ON REACTIVATES METER .
- 6. TEMPERATURE RANGE:
ELECTRONICS: 0 TO +140°F (-18 TO 60°C)
PROCESS: 40 TO +120°F (5 TO 50°C)
- 5. FLOW RATE: 0.5 TO 10 SCFM IN 1/4" LINE.
- 4. ELECTRICAL DATA:
POWER REQUIREMENTS: 5 TO 9 VDC
OUTPUT: 0-10 VDC AND 4-20 mA PROPORTIONAL TO MASS FLOW
- 3. PRESSURE, SAFETY PROOF (ELEMENT): 500 PSIG.
- 2. MAKE FROM 018070-01-01
- 1. MATERIAL:
ELEMENT: 300 SERIES STAINLESS STEEL.
ENCLOSURE: NONE

-01 CONFIG

ENVELOPE DRAWING

TOP ASSY		OEM		UNLESS OTHERWISE SPECIFIED DIMENSIONS ARE IN INCHES		CONTRACT NO.		FCI ® FLUID COMPONENTS INTL <i>a limited liability company</i> SAN MARCOS, CA 92069			
NEXT ASSY		USED ON		TOLERANCES		APPROVALS				DATE	
APPLICATION				MATERIAL		CONTRACT		DRAWN		TITLE	
THIRD ANGLE PROJECTION				NOTED		QUAL		SCHARF		9 VDC POWERED MASS FLOW METER	
MACH SURFACE FINISH: 125 RMS		MACH RAD: .030		DO NOT SCALE DRAWING		MFG		ENGR		SIZE	
PARTS TO BE FREE OF BURRS & SHARP EDGES						QA				B	
										CAGE CODE	
										64818	
										DWG NO.	
										ILLUSTRATION 7	
										REV	
										2	
										RELEASE DATE:	
										SCALE 1/1 SHEET 1 OF 1	

NOTES: UNLESS OTHERWISE SPECIFIED